

# V7 AIS

---

A Guide to  
Understanding New  
Features

V7

---



# Design Features

- Modular design allows for freedom to mix and match components:
  - Manage Supply Chain with ability to swap PC, Monitor, Ethernet switch, IO
  - Simplified maintenance and repair with ability to replace an individual damaged or malfunctioning component instead of having to replace the entire box.
- Standard 22" display
- Display is mounted separately. Can be mounted in Landscape (standard) or Portrait orientation for Broadcast Screen (EBC), QLS Check screen, Remote Display, etc
- Dual Monitor offers native Remote Display support and option to display independent content (EBC, Images, Dashboards, Plant Overview, etc)
- Dual AIS support (one V7 can host two AIS stations with independent displays and stack lights)
- Fully backward compatible with all versions of Error Proofing and SKS systems and devices

# Costs

## **V7 Options**

**Single Display: \$3100**

Available in 17" or 22" depending on customer requirements

**With Dual Display: \$3999**

Standard: 22"

24" or 27" available on demand

# Touchscreen

Default: 22" 4K - 16:9 aspect  
Optional: 17" 4K - 16:9 aspect

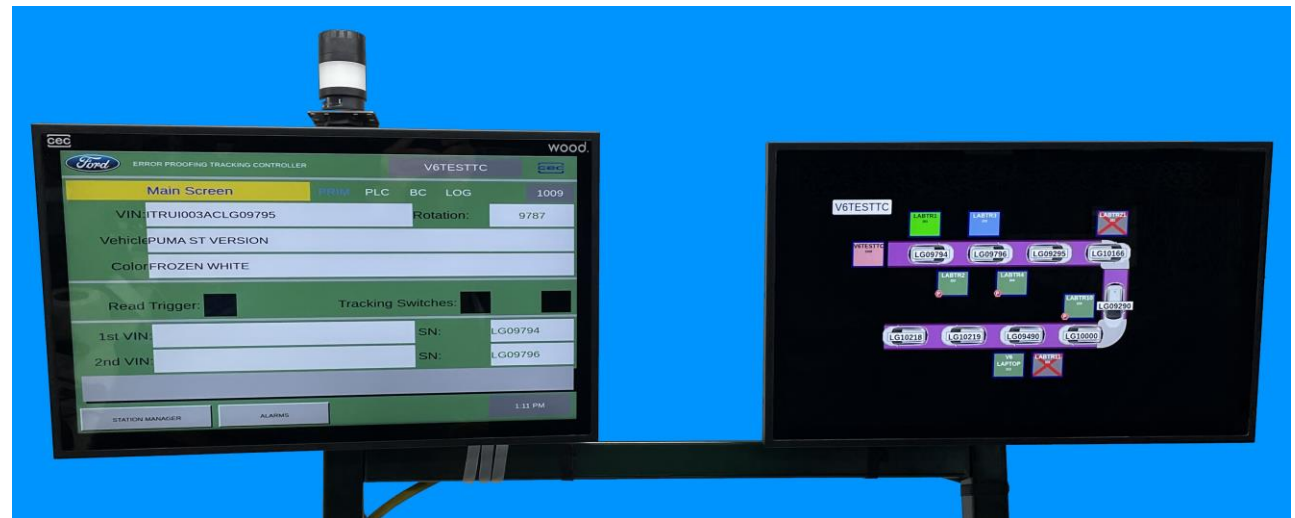


AIS Station with Remote Display, Message Screen, or Independent Content Screen

# Dual Screen Capability



Tracking Controller with Live line view showing line status, vehicles on the line, AIS Stations statuses, live view of AIS screens



# Industrial PC

---

- Rugged industrial housing
- Various processor choices
- Easy access to ports
- 2 x integrated 10/100/1000 Mbps Ethernet ports
- RS-232/422/485 port
- 4 GB Up to 64 GB RAM
- 60 GB Up to 960 GB Storage
- 4 x USB 3.1 ports
- 2 x display ports
- Expansion options for USB and Serial
- I/O expansion options



# Installation

Easy install, minor adaptation from Legacy AIS boxes:

- Same power cables and connection
- New 8-Amp power supply provided
- Same mounting pole
- Same Ethernet connection to MPN
- DC Tool Ethernet connection (New 4 Core)
- Stack Light mounted separately



# Value

- Cost in line with Ford's cost reduction targets
- 2 Year warranty (in line with FORD GVOSS)
- 12 Weeks lead time (Legacy AIS - 25 Weeks)
- Multi-purpose device
- Modular design
- Plant maintenance and support centered
- Swappable, easy access components
- Leveraged investment
- Dual display (optional)
- Display-less (optional)

# V7\_AIS Comparison with V6\_AIS

	AIS V7 (Phoenix Contact VL3 BPC)	AIS V6 (60008N)
Price	\$3100.00	\$3,350.00
CPU	Intel® Celeron® 6305E 1.8 GHz	NXP i.MX6 Cortex-A9 Quad cores ARM Processor @1.1 GHz
RAM	4GB	4GB
Graphics	Intel HD 530	
Screen	22" Screen - standard 17", 22", 24, and 27" available	12" Screen
Disk	60 GB M.2 SSD	32 G
Ethernet ports	2 x 10/100/1000 Mbps Ethernet interface (RJ45)	2x 10/100/1000 Mbps Ethernet interface (RJ45)
Video	2 DP	NA
USB ports	4 x USB 3.0	4 x USB 2.0
Serial Ports	1x RS-232/422/485	2x RS-232/422/485
External I/O	Optional Kit (8 x I/O) \$400	Optional Kit (8 x I/O) \$400
Onboard I/O	NA	8 x Onboard Click I/O