

CEC Controls Company

Designers and Builders of quality Process Control Systems

CEC Controls Company

CEC Controls Company, Inc., founded in 1966, specializes in the design, build and implementation of quality Industrial and Process Instrumentation & Control Systems. CEC Controls also provides maintenance monitoring systems fully equipped with fault alarm and production report generation capabilities.

CEC Controls has systems integration experience with multi-million dollar PLC based control systems. Each system we build utilizes the latest state-of-the-art technology and software available. In addition, the systems built by CEC Controls not only meet our customers expectations, but exceed the Industry Standards.

CEC Controls also excels in the Design and Systems Integration of the following types of Systems and Services:

- **Process Control Systems**
- **Plant Wide SCADA Control**
- **RTU Control Systems**
- **Wireless Telemetry**
- **Data Matrix / Barcode Readers and ID Traceability Systems**
- **PC Based Maintenance Monitoring and Downtime Reporting**
- **Programmable Device Support Systems**
- **Remote Program Diagnosis**

CEC Controls is registered to **ISO 9001:2000** and **Q1** industry standards. Each of these quality standards have been successfully retained since 1999. Our Quality Management System has been a valuable piece to our continued success within the electrical controls industry.



MISSION STATEMENT

As a supplier of electrical control systems, CEC strives to provide a product in which our customers have confidence and our employees have pride.

VISION STATEMENT

To be globally recognized as a premier producer of industrial electrical control systems.





CEC Headquarters



Engineering & CAD Department – 14,000 Sq. Ft.



Production & Inventory – 21,600 Sq. Ft

CORPORATE HEADQUARTERS

CORPORATE HEADQUARTERS

CEC Controls Company
 14555 Barber Ave.
 Warren, MI 48088-6002
 Tel: 586-779-0222
 Fax: 586-779-0266
 Fax: 586-775-8794 (Estimating)

CORPORATE FACILITIES:

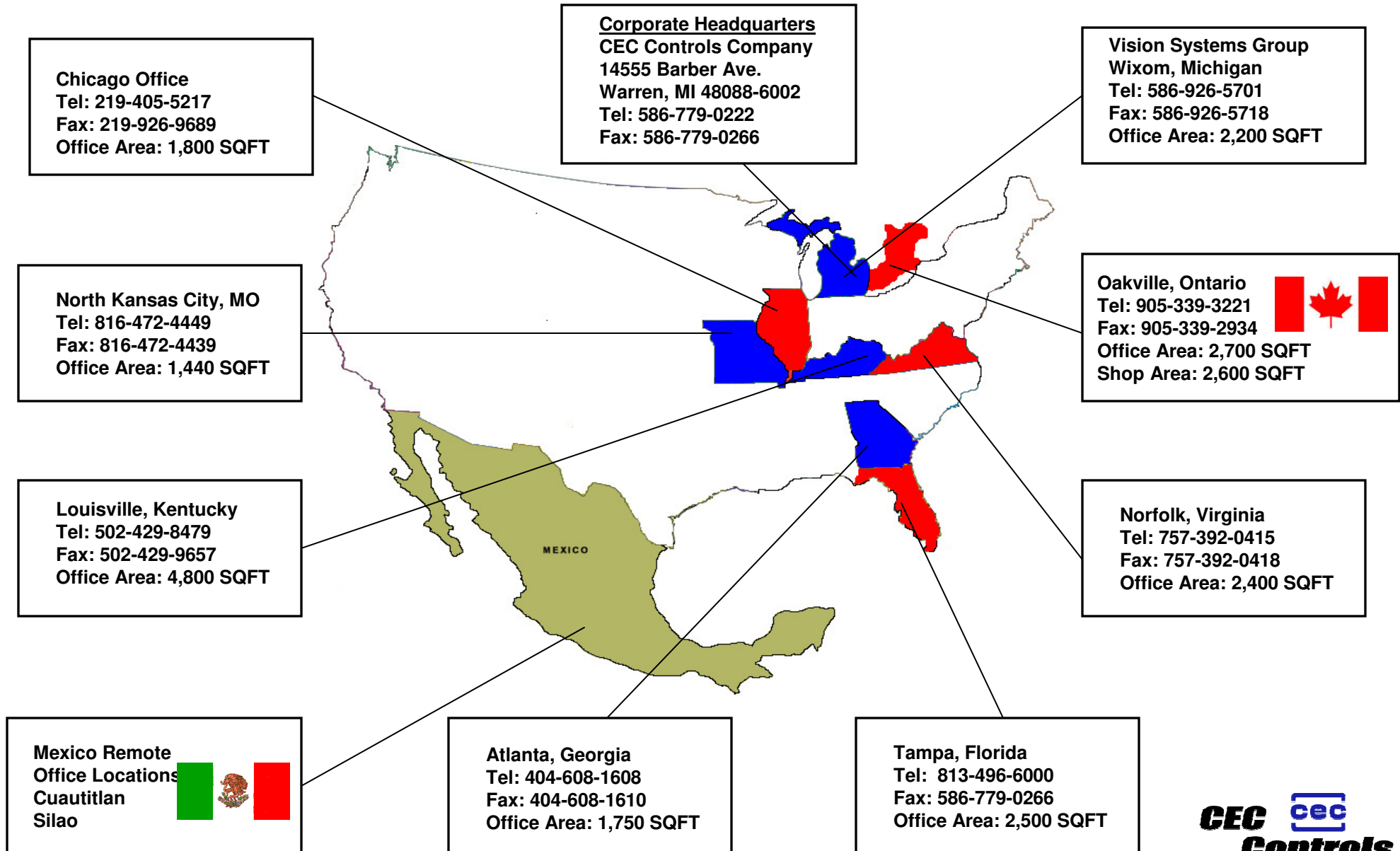
Administration & Estimating:	5,600 SQFT.
Engineering	8,400 SQFT.
CIM / IS	5,570 SQFT.
Manufacturing & Inventory	21,600 SQFT.

PERSONNEL:

President: Robert Scheper
 Vice President: Mike Palo

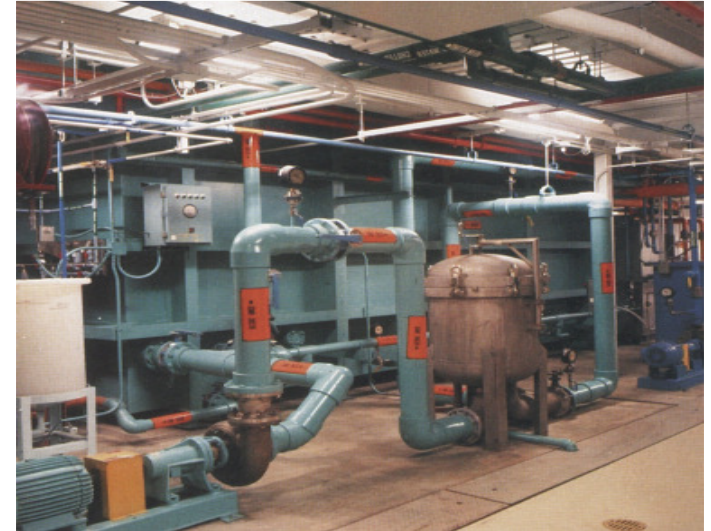
Administration & Purchasing	(7)
Branch Managers	(7)
Sales Manager	(1)
Sales Engineer	(1)
Estimating	(5)
Information Systems	(8)
Computer Integration Department	(12)
Engineering Department	(70)
Vision System Engineering	(5)
Drafting – CADD	(12)
Production Supervisors	(4)
Production Wiremen	(30)
Shipping & Receiving	(3)
Quality Manager	(1)

CEC Remote Offices



Process Experience

- Water / Wastewater Treatment
- Master Lift Pump Stations
- Sludge Control Systems
- Reverse Osmosis Controls
- Filter Control Systems
- SCADA Systems
- Wireless Telemetry
- Tank Farm Controls
- Facility Management Systems
- Temperature Control Systems
- Rotary Furnace Heat Treat
- Air Compressor Controls
- Chemical Feed Systems



Engineering & Design Services

■ Services

- PLC Configuration & Programming
- SCADA Network / RTU Engineering
- HMI / MMI Graphics Development
- Process P&ID and Loop Drawings
- AutoCAD generated I&C Drawings
- Custom Panel / Enclosure Design
- Field Retro-fits, Debug & Testing
- System Maintenance Contracts

■ PLC'S

- Allen Bradley PLC-5, SLC and Micrologix PLC Platforms
- Allen Bradley ControlLogix
- Automation Direct
- GE Fanuc
- Modicon
- Mitsubishi
- Siemens
- Honeywell

■ HMI / PC Based Controls

- Rockwell Factory Talk View
- Wonderware
- Proficy iFIX
- GE Cimplicity
- Siemens WinCC
- FactoryLink
- Visual Basic
- Utopic




■ Motion Controls

- Servo Controls
- VFD (Variable Frequency Drives)

■ Distributed Control Systems

- DeviceNet
- Profibus
- Ethernet
- Interbus
- Controlnet



CEC's Experienced with the Following Manufacturer's Products

- ABB Instrumentation
- Siemens Instrumentation
- McCrometer
- Endress & Hauser
- Milltronics
- Eurotherm Chessel
- Honeywell
- Rosemount
- MSA Gas Monitoring
- Drager Gas Monitoring
- Foxboro
- Yokogawa
- Flowline
- Emerson
- Hach
- Ametek
- Drexelbrook
- Accutech
- Phoenix Contact
- US Filter

PLC, Consulting & On-Site Services

- Specification Development
- HMI Screen Development
- Budget Forecasting
- I&C Sub-Consulting Services
- Project Management Services
- PLC Programming & Conversions
- Instrument Calibration Services
- Start-Up and Debug Assistance
- Installation Supervision
- Standby / On-site Services
- System Training



Information Systems Group

- Web-Site Design
- Web Security
- Interactive Web Media
- Database Administration
- Custom Networking
- VPN Services
- Corporate Intranets
- Data Hosting
- Consulting Services
- Application Development





Shop & Assembly

We employ only experienced panel builders.

We regularly build control panels for a wide variety of customers. In addition to our Engineered Systems, CEC Controls can also provide “Build Only” of both Industrial and Process Control Panels from your engineered drawings and bill of materials.

FEATURES

- Complete Panel Assembly
- Modular Wiring Systems
- Custom Engraving Solutions
- Graphic Layout / Tags
- Off-Site Shop Services
- Machine / System Wiring
- Custom Cable Assembly
- We “Hot Test” every Control Panel for Quality Assurance and Reliability
- Custom Operator Consoles
- Available in 1-10 Door Cabinets
- Built and Certified to NEMA, UL 508A and CSA Standards





Client List

- Allied Conveyors, LTD
- Allied Uniking
- ANR Pipeline
- ANR Storage Company
- Automatic Systems, Inc.
- BayView Electric
- Bechtel Power Corp.
- Bristol Steel
- Budd Company
- Campbell Soup
- City of Detroit, MI
- City of Norfolk, VA
- City of Port Huron, MI
- City of Hagerstown, MD.
- Comau Pico
- Daifuku of America
- Daimler Chrysler Corp.
- Dearborn Midwest Conveyor
- Dunn Electric Company
- Electrical Corp. of America
- Fata Automation Inc.
- Ford Motor Company
- General Motors Corp.
- Genesys Corp.
- George Koch & Sons, Inc.
- Grey Electric Corp.
- Great Lakes Steel
- Giffin International
- HD Supply
- H.M. White
- Honda of America
- Iowa Beef Packers, Inc.
- ITC / Hatzel Buehler Electric
- Jervis B. Webb Company
- J.S. Alberici Constructors
- Kemco Electric Contracting
- KUKA Welding Systems
- Lake Erie Electric
- Lehigh Portland Cement
- LESCO Design & Manufacturing
- Litton Unit Handling Systems
- Marathon Oil Corp.
- Mazda Motor Company
- McGraw Electric
- Motor City Electric
- MWH Americas, Inc.
- Newport News Pump Station
- NKC of America
- Northrop Grumman
- Oakland County Water Resource
- Orange County, Florida
- Rockwell International
- Sarasota County Environmental
- St. Brides Correctional WWTP
- Toyota
- Ultimation, Inc.
- United Electric Co.
- URS Corporation
- U.S. Machine Co.
- U.S. Mint
- Vlassic Foods
- Welch Foods